

Rispetto criterio CAM e principio DNSH

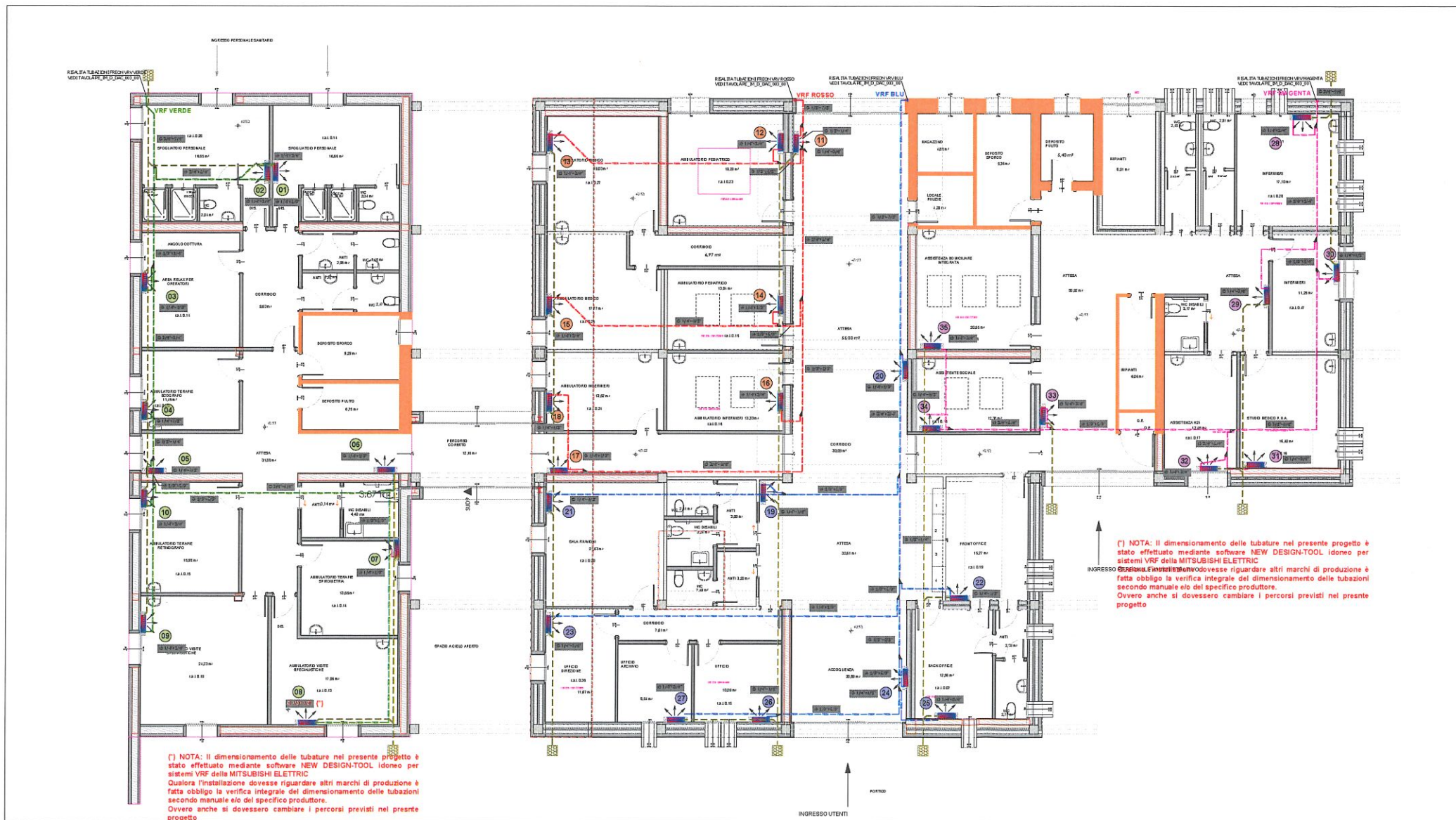
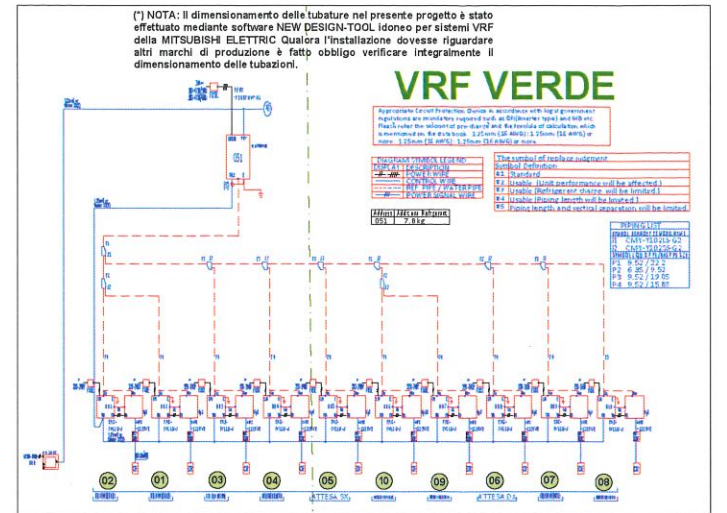
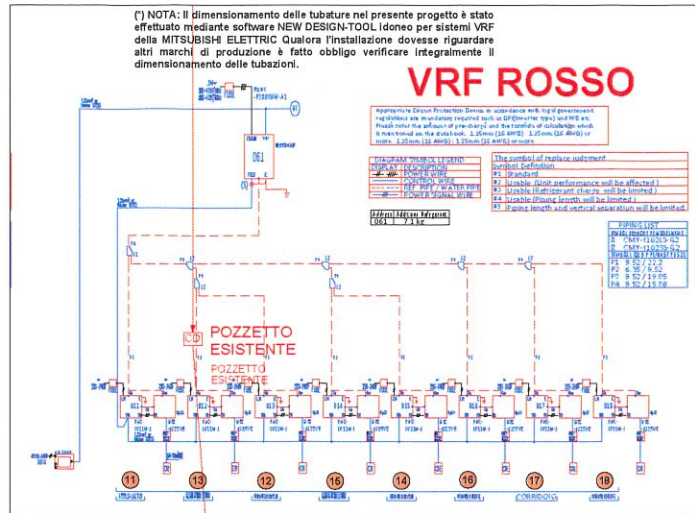
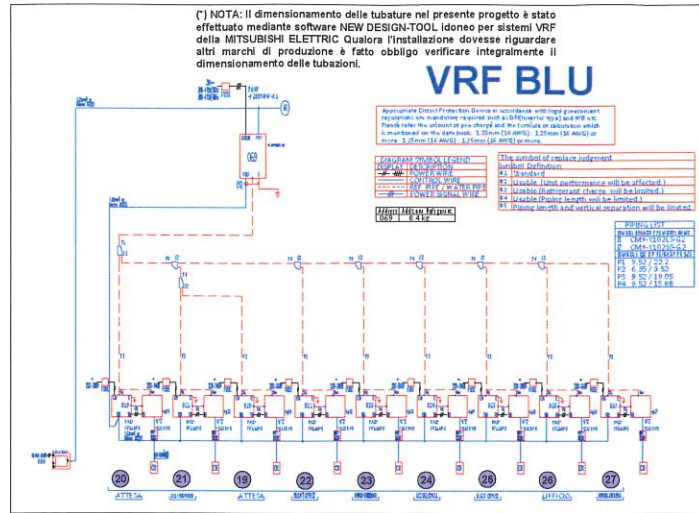
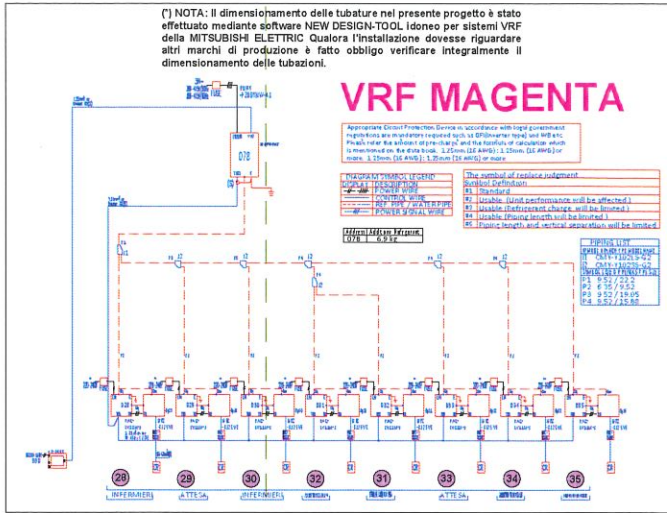
CRITERIO CAM

2.3.9 RISPARMIO IDRICO

Il progetto garantisce e prevede:

- l'impiego di sistemi di riduzione di flusso e controllo di portata e della temperatura dell'acqua. In particolare, tramite l'utilizzo di rubinetteria temperata ed elettronica con interruzione del flusso d'acqua per lavabi del bagno e delle docce e a basso consumo d'acqua (6 litri/min per lavandi, lavabi, bidet, 8 litri/min per docce misurati secondo le norme UNI EN 816, UNI EN 15001) e l'impiego di apparecchi sanitari con cassetta a doppio scarico avente scarico completo di massimo 6 litri e scarico ridotto di massimo 3 litri. In fase di esecuzione lavori, per i sistemi di riduzione di flusso e controllo di portata è richiesta una dichiarazione del produttore attestante che le caratteristiche tecniche del prodotto (portata) siano conformi, e che tali caratteristiche siano determinate sulla base delle norme di riferimento. In alternativa è richiesto il possesso di una etichettatura di prodotto, con l'indicazione del parametro portata, rilasciata da un organismo di valutazione della conformità (ad esempio l'etichettatura Unified Water Label - <http://www.europeanwaterlabel.eu/>)
- orinatoi senza acqua.

- La portata è regolata alla pressione standard di riferimento di 3,0/4,0/5,0/6,0/7,0/8,0/9,0/10,0/11,0/12,0/13,0/14,0/15,0/16,0/17,0/18,0/19,0/20,0/21,0/22,0/23,0/24,0/25,0/26,0/27,0/28,0/29,0/30,0/31,0/32,0/33,0/34,0/35,0/36,0/37,0/38,0/39,0/40,0/41,0/42,0/43,0/44,0/45,0/46,0/47,0/48,0/49,0/50,0/51,0/52,0/53,0/54,0/55,0/56,0/57,0/58,0/59,0/60,0/61,0/62,0/63,0/64,0/65,0/66,0/67,0/68,0/69,0/70,0/71,0/72,0/73,0/74,0/75,0/76,0/77,0/78,0/79,0/80,0/81,0/82,0/83,0/84,0/85,0/86,0/87,0/88,0/89,0/90,0/91,0/92,0/93,0/94,0/95,0/96,0/97,0/98,0/99,0/100,0/101,0/102,0/103,0/104,0/105,0/106,0/107,0/108,0/109,0/110,0/111,0/112,0/113,0/114,0/115,0/116,0/117,0/118,0/119,0/120,0/121,0/122,0/123,0/124,0/125,0/126,0/127,0/128,0/129,0/130,0/131,0/132,0/133,0/134,0/135,0/136,0/137,0/138,0/139,0/140,0/141,0/142,0/143,0/144,0/145,0/146,0/147,0/148,0/149,0/150,0/151,0/152,0/153,0/154,0/155,0/156,0/157,0/158,0/159,0/160,0/161,0/162,0/163,0/164,0/165,0/166,0/167,0/168,0/169,0/170,0/171,0/172,0/173,0/174,0/175,0/176,0/177,0/178,0/179,0/180,0/181,0/182,0/183,0/184,0/185,0/186,0/187,0/188,0/189,0/190,0/191,0/192,0/193,0/194,0/195,0/196,0/197,0/198,0/199,0/200,0/201,0/202,0/203,0/204,0/205,0/206,0/207,0/208,0/209,0/210,0/211,0/212,0/213,0/214,0/215,0/216,0/217,0/218,0/219,0/220,0/221,0/222,0/223,0/224,0/225,0/226,0/227,0/228,0/229,0/230,0/231,0/232,0/233,0/234,0/235,0/236,0/237,0/238,0/239,0/240,0/241,0/242,0/243,0/244,0/245,0/246,0/247,0/248,0/249,0/250,0/251,0/252,0/253,0/254,0/255,0/256,0/257,0/258,0/259,0/260,0/261,0/262,0/263,0/264,0/265,0/266,0/267,0/268,0/269,0/270,0/271,0/272,0/273,0/274,0/275,0/276,0/277,0/278,0/279,0/280,0/281,0/282,0/283,0/284,0/285,0/286,0/287,0/288,0/289,0/290,0/291,0/292,0/293,0/294,0/295,0/296,0/297,0/298,0/299,0/300,0/301,0/302,0/303,0/304,0/305,0/306,0/307,0/308,0/309,0/310,0/311,0/312,0/313,0/314,0/315,0/316,0/317,0/318,0/319,0/320,0/321,0/322,0/323,0/324,0/325,0/326,0/327,0/328,0/329,0/330,0/331,0/332,0/333,0/334,0/335,0/336,0/337,0/338,0/339,0/340,0/341,0/342,0/343,0/344,0/345,0/346,0/347,0/348,0/349,0/350,0/351,0/352,0/353,0/354,0/355,0/356,0/357,0/358,0/359,0/360,0/361,0/362,0/363,0/364,0/365,0/366,0/367,0/368,0/369,0/370,0/371,0/372,0/373,0/374,0/375,0/376,0/377,0/378,0/379,0/380,0/381,0/382,0/383,0/384,0/385,0/386,0/387,0/388,0/389,0/390,0/391,0/392,0/393,0/394,0/395,0/396,0/397,0/398,0/399,0/400,0/401,0/402,0/403,0/404,0/405,0/406,0/407,0/408,0/409,0/410,0/411,0/412,0/413,0/414,0/415,0/416,0/417,0/418,0/419,0/420,0/421,0/422,0/423,0/424,0/425,0/426,0/427,0/428,0/429,0/430,0/431,0/432,0/433,0/434,0/435,0/436,0/437,0/438,0/439,0/440,0/441,0/442,0/443,0/444,0/445,0/446,0/447,0/448,0/449,0/450,0/451,0/452,0/453,0/454,0/455,0/456,0/457,0/458,0/459,0/460,0/461,0/462,0/463,0/464,0/465,0/466,0/467,0/468,0/469,0/470,0/471,0/472,0/473,0/474,0/475,0/476,0/477,0/478,0/479,0/480,0/481,0/482,0/483,0/484,0/485,0/486,0/487,0/488,0/489,0/490,0/491,0/492,0/493,0/494,0/495,0/496,0/497,0/498,0/499,0/500,0/501,0/502,0/503,0/504,0/505,0/506,0/507,0/508,0/509,0/510,0/511,0/512,0/513,0/514,0/515,0/516,0/517,0/518,0/519,0/520,0/521,0/522,0/523,0/524,0/525,0/526,0/527,0/528,0/529,0/530,0/531,0/532,0/533,0/534,0/535,0/536,0/537,0/538,0/539,0/540,0/541,0/542,0/543,0/544,0/545,0/546,0/547,0/548,0/549,0/550,0/551,0/552,0/553,0/554,0/555,0/556,0/557,0/558,0/559,0/560,0/561,0/562,0/563,0/564,0/565,0/566,0/567,0/568,0/569,0/570,0/571,0/572,0/573,0/574,0/575,0/576,0/577,0/578,0/579,0/580,0/581,0/582,0/583,0/584,0/585,0/586,0/587,0/588,0/589,0/590,0/591,0/592,0/593,0/594,0/595,0/596,0/597,0/598,0/599,0/600,0/601,0/602,0/603,0/604,0/605,0/606,0/607,0/608,0/609,0/610,0/611,0/612,0/613,0/614,0/615,0/616,0/617,0/618,0/619,0/620,0/621,0/622,0/623,0/624,0/625,0/626,0/627,0/628,0/629,0/630,0/631,0/632,0/633,0/634,0/635,0/636,0/637,0/638,0/639,0/640,0/641,0/642,0/643,0/644,0/645,0/646,0/647,0/648,0/649,0/650,0/651,0/652,0/653,0/654,0/655,0/656,0/657,0/658,0/659,0/660,0/661,0/662,0/663,0/664,0/665,0/666,0/667,0/668,0/669,0/670,0/671,0/672,0/673,0/674,0/675,0/676,0/677,0/678,0/679,0/680,0/681,0/682,0/683,0/684,0/685,0/686,0/687,0/688,0/689,0/690,0/691,0/692,0/693,0/694,0/695,0/696,0/697,0/698,0/699,0/700,0/701,0/702,0/703,0/704,0/705,0/706,0/707,0/708,0/709,0/710,0/711,0/712,0/713,0/714,0/715,0/716,0/717,0/718,0/719,0/720,0/721,0/722,0/723,0/724,0/725,0/726,0/727,0/728,0/729,0/730,0/731,0/732,0/733,0/734,0/735,0/736,0/737,0/738,0/739,0/740,0/741,0/742,0/743,0/744,0/745,0/746,0/747,0/748,0/749,0/750,0/751,0/752,0/753,0/754,0/755,0/756,0/757,0/758,0/759,0/760,0/761,0/762,0/763,0/764,0/765,0/766,0/767,0/768,0/769,0/770,0/771,0/772,0/773,0/774,0/775,0/776,0/777,0/778,0/779,0/780,0/781,0/782,0/783,0/784,0/785,0/786,0/787,0/788,0/789,0/790,0/791,0/792,0/793,0/794,0/795,0/796,0/797,0/798,0/799,0/800,0/801,0/802,0/803,0/804,0/805,0/806,0/807,0/808,0/809,0/810,0/811,0/812,0/813,0/814,0/815,0/816,0/817,0/818,0/819,0/820,0/821,0/822,0/823,0/824,0/825,0/826,0/827,0/828,0/829,0/830,0/831,0/832,0/833,0/834,0/835,0/836,0/837,0/838,0/839,0/840,0/841,0/842,0/843,0/844,0/845,0/846,0/847,0/848,0/849,0/850,0/851,0/852,0/853,0/854,0/855,0/856,0/857,0/858,0/859,0/860,0/861,0/862,0/863,0/864,0/865,0/866,0/867,0/868,0/869,0/870,0/871,0/872,0/873,0/874,0/875,0/876,0/877,0/878,0/879,0/880,0/881,0/882,0/883,0/884,0/885,0/886,0/887,0/888,0/889,0/890,0/891,0/892,0/893,0/894,0/895,0/896,0/897,0/898,0/899,0/900,0/901,0/902,0/903,0/904,0/905,0/906,0/907,0/908,0/909,0/910,0/911,0/912,0/913,0/914,0/915,0/916,0/917,0/918,0/919,0/920,0/921,0/922,0/923,0/924,0/925,0/926,0/927,0/928,0/929,0/930,0/931,0/932,0/933,0/934,0/935,0/936,0/937,0/938,0/939,0/940,0/941,0/942,0/943,0/944,0/945,0/946,0/947,0/948,0/949,0/950,0/951,0/952,0/953,0/954,0/955,0/956,0/957,0/958,0/959,0/960,0/961,0/962,0/963,0/964,0/965,0/966,0/967,0/968,0/969,0/970,0/971,0/972,0/973,0/974,0/975,0/976,0/977,0/978,0/979,0/980,0/981,0/982,0/983,0/984,0/985,0/986,0/987,0/988,0/989,0/990,0/991,0/992,0/993,0/994,0/995,0/996,0/997,0/998,0/999,0/1000,0/1001,0/1002,0/1003,0/1004,0/1005,0/1006,0/1007,0/1008,0/1009,0/1010,0/1011,0/1012,0/1013,0/1014,0/1015,0/1016,0/1017,0/1018,0/1019,0/1020,0/1021,0/1022,0/1023,0/1024,0/1025,0/1026,0/1027,0/1028,0/1029,0/1030,0/1031,0/1032,0/1033,0/1034,0/1035,0/1036,0/1037,0/1038,0/1039,0/1040,0/1041,0/1042,0/1043,0/1044,0/1045,0/1046,0/1047,0/1048,0/1049,0/1050,0/1051,0/1052,0/1053,0/1054,0/1055,0/1056,0/1057,0/1058,0/1059,0/1060,0/1061,0/1062,0/1063,0/1064,0/1065,0/1066,0/1067,0/1068,0/1069,0/1070,0/1071,0/1072,0/1073,0/1074,0/1075,0/1076,0/1077,0/1078,0/1079,0/1080,0/1081,0/1082,0/1083,0/1084,0/1085,0/1086,0/1087,0/1088,0/1089,0/1090,0/1091,0/1092,0/1093,0/1094,0/1095,0/1096,0/1097,0/1098,0/1099,0/1100,0/1101,0/1102,0/1103,0/1104,0/1105,0/1106,0/1107,0/1108,0/1109,0/1110,0/1111,0/1112,0/1113,0/1114,0/1115,0/1116,0/1117,0/1118,0/1119,0/1120,0/1121,0/1122,0/1123,0/1124,0/1125,0/1126,0/1127,0/1128,0/1129,0/1130,0/1131,0/1132,0/1133,0/1134,0/1135,0/1136,0/1137,0/1138,0/1139,0/1140,0/1141,0/1142,0/1143,0/1144,0/1145,0/1146,0/1147,0/1148,0/1149,0/1150,0/1151,0/1152,0/1153,0/1154,0/1155,0/1156,0/1157,0/1158,0/1159,0/1160,0/1161,0/1162,0/1163,0/1164,0/1165,0/1166,0/1167,0/1168,0/1169,0/1170,0/1171,0/1172,0/1173,0/1174,0/1175,0/1176,0/1177,0/1178,0/1179,0/1180,0/1181,0/1182,0/1183,0/1184,0/1185,0/1186,0/1187,0/1188,0/1189,0/1190,0/1191,0/1192,0/1193,0/1194,0/1195,0/1196,0/1197,0/1198,0/1199,0/1200,0/1201,0/1202,0/1203,0/1204,0/1205,0/1206,0/1207,0/1208,0/1209,0/1210,0/1211,0/1212,0/1213,0/1214,0/1215,0/1216,0/1217,0/1218,0/1219,0/1220,0/1221,0/1222,0/1223,0/1224,0/1225,0/1226,0/1227,0/1228,0/1229,0/1230,0/1231,0/1232,0/1233,0/1234,0/1235,0/1236,0/1237,0/1238,0/1239,0/1240,0/1241,0/1242,0/1243,0/1244,0/1245,0/1246,0/1247,0/1248,0/1249,0/1250,0/1251,0/1252,0/1253,0/1254,0/1255,0/1256,0/1257,0/1258,0/1259,0/1260,0/1261,0/1262,0/1263,0/1264,0/1265,0/1266,0/1267,0/1268,0/1269,0/1270,0/1271,0/1272,0/1273,0/1274,0/1275,0/1276,0/1277,0/1278,0/1279,0/1280,0/1281,0/1282,0/1283,0/1284,0/1285,0/1286,0/1287,0/1288,0/1289,0/1290,0/1291,0/1292,0/1293,0/1294,0/1295,0/1296,0/1297,0/1298,0/1299,0/1300,0/1301,0/1302,0/1303,0/1304,0/1305,0/1306,0/1307,0/1308,0/1309,0/1310,0/1311,0/1312,0/1313,0/1314,0/1315,0/1316,0/1317,0/1318,0/1319,0/1320,0/1321,0/1322,0/1323,0/1324,0/1325,0/1326,0/1327,0/1328,0/1329,0/1330,0/1331,0/1332,0/1333,0/1334,0/1335,0/1336,0/1337,0/1338,0/1339,0/1340,0/1341,0/1342,0/1343,0/1344,0/1345,0/1346,0/1347,0/1348,0/1349,0/1350,0/1351,0/1352,0/1353,0/1354,0/1355,0/1356,0/1357,0/1358,0/1359,0/1360,0/1361,0/1362,0/1363,0/1364,0/1365,0/1366,0/1367,0/1368,0/1369,0/1370,0/1371,0/1372,0/1373,0/1374,0/1375,0/1376,0/1377,0/1378,0/1379,0/1380,0/1381,0/1382,0/1383,0/1384,0/1385,0/1386,0/1387,0/1388,0/1389,0/1390,0/1391,0/1392,0/1393,0/1394,0/1395,0/1396,0/1397,0/1398,0/1399,0/1400,0/1401,0/1402,0/1403,0/1404,0/1405,0/1406,0/1407,0/1408,0/1409,0/1410,0/1411,0/1412,0/1413,0/1414,0/1415,0/1416,0/1417,0/1418,0/1419,0/1420,0/1421,0/1422,0/1423,0/1424,0/1425,0/1426,0/1427,0/1428,0/1429,0/1430,0/1431,0/1432,0/1433,0/1434,0/1435,0/1436,0/1437,0/1438,0/1439,0/1440,0/1441,0/1442,0/1443,0/1444,0/1445,0/1446,0/1447,0/1448,0/1449,0/1450,0/1451,0/1452,0/1453,0/1454,0/1455,0/1456,0/1457,0/1458,0/1459,0/1460,0/1461,0/1462,0/1463,0/1464,0/1465,0/1466,0/1467,0/1468,0/1469,0/1470,0/1471,0/1472,0/1473,0/1474,0/1475,0/1476,0/1477,0/1478,0/1479,0/1480,0/1481,0/1482,0/1483,0/1484,0/1485,0/1486,0/1487,0/1488,0/1489,0/1490,0/1491,0/1492,0/1493,0/1494,0/1495,0/1496,0/1497,0/1498,0/1499,0/1500,0/1501,0/1502,0/1503,0/1504,0/1505,0/1506,0/1507,0/1508,0/1509,0/1510,0/1511,0/1512,0/1513,0/1514,0/1515,0/1516,0/1517,0/1518,0/1519,0/1520,0/1521,0/1522,0/1523,0/1524,0/1525,0/1526,0/1527,0/1528,0/1529,0/1530,0/1531,0/1532,0/1533,0/1534,0/1535,0/1536,0/1537,0/1538,0/1539,0/1540,0/1541,0/1542,0/1543,0/1544,0/1545,0/1546,0/1547,0/1548,0/1549,0/1550,0/1551,0/1552,0/1553,0/1554,0/1555,0/1556,0/1557,0/1558,0/1559,0/1560,0/1561,0/1562,0/1563,0/1564,0/1565,0/1566,0/1567,0/1568,0/1569,0/1570,0/1571,0/1572,0/1573,0/1574,0/1575,0/1576,0/1577,0/1578,0/1579,0/1580,0/1581,0/1582,0/1583,0/1584,0/1585,0/1586,0/1587,0/1588,0/1589,0/1590,0/1591,0/1592,0/1593,0/1594,0/1595,0/1596,0/1597,0/1598,0/1599,0/1600,0/1601,0/1602,0/1603,0/1604,0/1605,0/1606,0/1607,0/1608,0/1609,0/1610,0/1611,0/1612,0/1613,0/1614,0/1615,0/1616,0/1617,0/1618,0/1619,0/1620,0/1621,0/1622,0/1623,0/1624,0/1625,0/1626,0/1627,0/1628,0/1629,0/1630,0/1631,0/1632,0/1633,0/1634,0/1635,0/1636,0/1637,0/1638,0/1639,0/1640,0/1641,0/1642,0/1643,0/1644,0/1645,0/1646,0/1647,0/1648,0/1649,0/1650,0/1651,0/1652,0/1653,0/1654,0/1655,0/1656,0/1657,0/1658,0/1659,0/1660,0/1661,0/1662,0/1663,0/1664,0/1665,0/1666,0/1667,0/1668,0/1669,0/1670,0/1671,0/1672,0/1673,0/1674,0/1675,0/1676,0/1677,0/1678,0/1679,0/1680,0/1681,0/1682,0/1683,0/1684,0/1685,0/1686,0/1687,0/1688,0/1689,0/1690,0/1691,0/1692,0/1693,0/1694,0/1695,0/1696,0/1697,0/1698,0/1699,0/1700,0/1701,0/1702,0/1703,0/1704,0/1705,0/1706,0/1707,0/1708,0/1709,0/1710,0/1711,0/1712,0/1713,0/1714,0/1715,0/1716,0/1717,0/1718,0/1719,0/1720,0/1721,0/1722,0/1723,0/1724,0/1725,0/1726,0/1727,0/1728,0/1729,0/1730,0/1731,0/1732,0/1733,0/1734,0/1735,0/1736,0/1737,0/1738,0/1739,0/1740,0/1741,0/1742,0/1743,0/1744,0/1745,0/1746,0/1747,0/1748,0/1749,0/1750,0/1751,0/1752,0/1753,0/1754,0/1755,0/1756,0/1757,0/1758,0/1759,0/1760,0/1761,0/1762,0/1763,0/1764,0/1765,0/1766,0/1767,0/1768,0/1769,0/1770,0/1771,0/1772,0/1773,0/1774,0/1775,0/1776,0/1777,0/1778,0/1779,0/1780,0/1781,0/1782,0/1783,0/1784,0/1785,0/1786,0/1787,0/1788,0/1789,0/1790,0/1791,0/1792,0/1793,0/1794,0/1795,0/1796,0/1797,0/1798,0/1799,0/1800,0/1801,0/1802,0/1803,0/1804,0/1805,0/1806,0/1807,0/1808,0/1809,0/1810,0/1811,0/1812,0/1813,0/1814,0/1815,0/1816,0/1817,0/1818,0/1819,0/1820,0/1821,0/1822,0/1823,0/1824,0/1825,0/1826,0/1827,0/1828,0/1829,0/1830,0/1831,0/1832,0/1833,0/1834,0/1835,0/1836,0/1837,0/1838,0/1839,0/1840,0/1841,0/1842,0/1843,0/1844,0/1845,0/1846,0/1847,0/1848,0/1849,0/1850,0/1851,0/1852,0/1853,0/1854,



LEGENDA

	TUBAZIONI GAS FRIGORIGENO R410a - IMPIANTO VRF MAGENTA
	TUBAZIONI GAS FRIGORIGENO R410a - IMPIANTO VRF VERDE
	TUBAZIONI GAS FRIGORIGENO R410a - IMPIANTO VRF ROSSO
	TUBAZIONI GAS FRIGORIGENO R410a - IMPIANTO VRF BLU
	UNITA' INTERNE VRF A PAVIMENTO - FARE RIFERIMENTO ALLO SCHEMA SKELTON PER PAG. 7 E MODELLO CON PANNELLO DI CONTROLLO A BORDO
	GIUNTO REFNET IMPIANTO VRF
	TUBAZIONE SCARICO CONDENZA
	POZZETTO SCARICO CONDENZA A PERDERE

UNITA' INTERNA A PAVIMENTO "MITSUBISHI mod. MFZ - KJ" O EQUIVALENTE

DATI DIMENSIONALI				
Gr.	L	P	H	Peso
	[mm]	[mm]	[mm]	[kg]
25	600	215	750	15
35	600	215	750	15
50	600	215	750	15

DATI TECNICI NOMINALI		
Gr.	Raffreddamento	Riscaldamento
	[kW]	[kW]
25	2,50	3,40
35	3,60	4,00
50	3,60	4,00

N.b. essendo l'unità posata a vista ed a livello pavimento, ai sensi del criterio CAM 2.4.4 l'ispezionabilità e la manutenzione dello stesso è sempre garantita ed agevole.

DATI TECNICI UNITA' ESTERNA "MITSUBISHI PUHY-P20Y1NW-A" O EQUIVALENTE

DATI DIMENSIONALI			
L	P	H	Peso
[mm]	[mm]	[mm]	[kg]
700	740	1850	225

DATI TECNICI POMPA DI CALORE			
Modello	Te 35°C / Tc 20°C	Te 35°C / Tc 20°C	Te 35°C / Tc 20°C
	[kW]	[kW]	[kW]
PUHY-P20Y1NW-A	22,4	25,9	2,305-4,5

N.b. essendo l'unità posata a pavimento su copertura piana, ai sensi del criterio CAM 2.4.4 l'ispezionabilità e la manutenzione dello stesso è sempre garantita ed agevole.

Finanziato dall'Unione europea
NextGenerationEU

REGIONE DEL VENETO

ULSS2
MARCA TREVIGIANA

Oggetto: **PIANO NAZIONALE DI RIPRESA E RESILIENZA (PNRR) E PIANO NAZIONALE COMPLEMENTARE (PNC)**
Missione 6 - SALUTE

COMPONENTE C1
M6C1.1
"Case della Comunità e presa in carico delle persone"

LAVORI DI RISTRUTTURAZIONE EX SCUOLA PRIMARIA DI PAESE (TV) PER LA REALIZZAZIONE DELLA NUOVA CASA DELLA COMUNITA'
CIG: 9248331C2A - CUP: I98I22000100009

Elaborato: **MECCANICO**
PE_IM_D_PTI_002_02

Scala: 1:100

Tavola:

DISTRIBUZIONE IMPIANTO VRF
PIANO TERRA

Progettazione:
RAGGRUPPAMENTO TEMPORANEO TRA PROFESSIONISTI:

STUDIO ASSOCIATO FRANCESCHIN
Via D. Manni 107 - 31044 Montebelluna (TV)
Tel. 0422/833333 - Fax 0422/833333 - Email: franceschin.ingegneri@libero.it

TRE ERRE INGEGNERIA S.r.l.
Via Venezia 10 - 31023 Fregene (TV)
Tel. 0422/833333 - Fax 0422/833333 - Email: treerre@treerre.it

Ing. Raffaele Fuser
Progettista opere Strutturali
Tecnico Anticorrosione - Costr. Sicurezza
Collaboratori:
Arch. Giovanni Olivero
Dott. Lisa Laura Brandi

Ing. Lorenzo Pezzoli
Collaboratore Ingegnere Meccanico
Dott. Lisa Laura Brandi

NEW PROJECT S.r.l.
Via Carcano 10 - 31044 Montebelluna (TV)
Tel. 0422/833333 - Fax 0422/833333 - Email: newproject@newproject.it

Perito Industriale LUCA BUSATTO
Progettista opere Elettrotecniche
Collaboratore Ingegnere Meccanico
Dott. Lisa Laura Brandi

Data: 20/03/2023 Revisione: 02_17.04.2023

Il Responsabile del Procedimento:
Azienda ULSS 2 Marca Trevigiana
dott. Lucio D'Este